

Leslie Dietsch and Jerry Gray: Moments in Latitude

April 17 – June 21, 2026

20 NORTH
GALLERY

18 N. St. Clair Street, Toledo, Ohio 43604 419-241-2400
20northgallery.com — info@20northgallery.com

An exhibition of traditional and alternative landscape in painting and photography

Moments in Latitude pairs Leslie Dietsch's oil vistas with Jerry Gray's physically-manipulated monoprints, forming a transportive installation of landscapes.

Portraying the beauty of the Great Lakes and its environs, Dietsch's paintings capture an intimate and at times nostalgic view of rural and maritime scenes. Dietsch's paintings on canvas and panel preserve a place and moment in time, recording the distinguishing ways the elements influence the scene. Gray's alternative prints memorialize moments from hiking and cross-country travel, manipulating the images in an exploration of the malleability of memory. Through a variety of processes, Gray hand-works his unique monoprints on paper or acetate, which are pinned to panel, like a collection of artifacts welcoming closer study.

Based in Erie, Michigan and Toledo, Ohio respectively, Dietsch and Gray each hand-craft the frames for their distinct and individual series featured in this exhibition.

20 NORTH
GALLERY

Leslie Dietsch and Jerry Gray:
Moments in Latitude
April 17 – June 21, 2026

*An exhibition of traditional
and alternative landscape
in painting and photography*

View the online catalogue at 20northgallery.com

18 N. St. Clair Street
Toledo, Ohio 43604
419 - 241 - 2400
20northgallery.com

Gallery Hours:
Wed. - Sat.
Noon - 4 p.m.
Or By Appointment

© 2026 20 North Gallery. All rights reserved.

Leslie Dietsch and Jerry Gray:
Moments in Latitude

April 17 – June 21, 2026

Index

◇ Indicates artist's work is in permanent museum or public collections.

Exhibit Text	Page 2	◇ Leslie Dietsch	Pages 3 - 8
		Jerry Gray	Pages 9 - 14

Forward:

Longitude and latitude define the physical parameters of geography. *Leslie Dietsch and Jerry Gray: Moments in Latitude* defines the role of landscape in the metaphysical parameters of the human condition.

Both artists, Dietsch and Gray, employ the traditional subject of landscape to not only record the natural world, but also to interpret its fundamental impression upon themselves during immersion in their environs—creating testaments to the terrain that surrounds and grounds us.

Dietsch's *en plein air* oil paintings memorialize specific times in locations of special importance to her, the topography of the Great Lakes region. Inherent in this preservation of individual instances is the dual goal of preserving the natural landscape, itself. Her paintings are authentic depictions of familiar spaces, but their sensitive rendering creates a sense of idealization, a specialness intrinsic of the moments she captures, whilst the realism of the scene gently transforms into the abstraction of endless fields, sky and waves.

Gray's physically manipulated photographic monoprints produce echoes of the original subject matter, Western vistas and Midwestern scenery captured during recent cross-country sojourns. Printed and overpainted on absorbent rice paper or, conversely, printed onto shimmering translucent acetate hovering above its substrate, his reoccurring imagery is noticeably altered from the "natural," like memories that have shifted over time. Countering this implied transience, Gray literally pins down his subject matter into his artist-made frames, locking them into place, but in a manner that suggests they could still drift away.

Both artists also share written narrative about their motives and processes: Dietsch's ekphrastic poetry reveals deeper layers of meaning in her atmospheric compositions, contrasting the ephemeral and the eternal; Gray's journal-like commentary serves to document specific purposes his artwork embodies for him, both bodily and spiritually.

Two artists on separate journeys—both in their techniques and their travels—who arrive at the same vantage point: Landscape as enduring experience.

Condessa Croninger
Art Director, 20 North Gallery

Leslie Dietsch ◊

Erie, Michigan

Artist Biography

Leslie Dietsch received her B.S. in Nursing from The University of Toledo (Toledo, Ohio) in 2014. She has studied fine art as well as supplemented her skills through intensive courses and workshops at Scottsdale Artist School (Scottsdale, Arizona), the Art Supply Depō (Toledo, Ohio), Artensity (Ann Arbor, Michigan) and more. In 2025, Dietsch was Artist-in-Residence at Sault Area Art Center (Sault Ste. Marie, Michigan) and has since been awarded a residency through Jordan River Arts Council (East Jordan, Michigan). Based in Southeast Michigan with a studio in Point Place, Toledo, Ohio, Leslie draws inspiration from her life as an avid sailor and environmental advocate.

Her paintings have been exhibited in numerous shows in Michigan, Wisconsin, Oregon and Ohio, earning her numerous juried honors, such as First Place in 2D in the 17th Annual NOW OH at Bowling Green State University (Bowling Green, Ohio), a NAACP award in the 2024 Robert S. Duncanson Society Plein Air Paint Out (Monroe, Michigan) and an Honorable Mention in the TFAS 2023 Juried Members' Exclusive Exhibition (Toledo, Ohio). Additional exhibitions and arts festivals she has participated in include *Teeny, Tiny, Bold* at Roundtree Gallery (Platteville, Wisconsin), *The Art of Culinary* at Nicolet College (Rhineland, Wisconsin), *Tributary II* at Verumultimum Gallery (Portland, Oregon) and the 2026 *Art Fare: Community Art Exhibit* as part of *EAT!* at The University of Michigan Matthaei Botanical Gardens (Ann Arbor). Through the Arts Commission of Greater Toledo (Ohio), Dietsch has exhibited in *Momentum* and *Artomatic 419*, with her interactive displays that encourage community participation. Dietsch's installation work also includes *Art in the Trees* at Palmer Park (Detroit, Michigan), in 2025.



Leslie Dietsch
Photo courtesy of the artist

In both 2023 and 2024, Dietsch enjoyed solo exhibitions at The Village Players Theatre (Toledo, Ohio) (*Along the Water*, 2023; *Love is a Verb, It's What We Do*, 2024) and the Sanger Branch of the Toledo Lucas County Public Library (Ohio) (*TOYS!*, 2023; *Food is Life!*, 2024).

Dietsch's artworks form part of public and private permanent collections across the Midwest, including the collection of Henry Ford Health (Detroit, Michigan). Dietsch is a current and active member of multiple local and regional art organizations, including the Toledo Artists' Club (Board member since 2019), Point Place Area Art Committee (since 2022, serving as Chair since 2024), Point Place Business Association (Board member since 2026) and the Athena Art Society (since 2024).

Artist Statement

My work explores the quiet and often overlooked corners of our natural world. I am drawn to the salt marshes, the backwaters, and the shifting light of the Great Lakes region. In a world of mass production and digital replication, I find my purpose in the singular moment. Each piece in this collection is a record of a specific time and place where the elements of wind, humidity, and the moving sun become active participants in the painting process.

Painting on archival canvas and wood panels, I seek to translate the tension and tranquility found in nature into a visual language of color and texture. From the movement of the Black River to the soft light of the dusk, my landscapes are not mere documentations of scenery. They are intimate slices of my experience.

I create these works with no plan for replication, ensuring that each painting remains as unique as the moment that inspired it. For me, landscape painting is an act of preservation. I aim to capture the fleeting rhythm of a tributary or the morning light through a grove before it shifts forever. This exhibition is an invitation to the viewer to slow down, to appreciate the value of the original, and to find their own story within these painted horizons.



Leslie Dietsch's easel at her dock
Photo courtesy of the artist

Leslie Dietsch Artwork

All work available for purchase. All artwork images provided by Leslie Dietsch. Dimensions reflect canvas size.



Pine Creek; \$750
Oil; 40”H x 30”W; 2024



Among the Reeds and Grasses; \$300
Oil; 10”H x 10”W; 2025

*“Among the reeds and the grasses
Waters swell
Shallows drain
Still.”*



**Reflections of
What's Left; \$210**
Oil; 6”H x 8”W; 2025

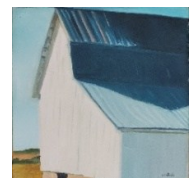


At the Bottom; \$180 Sold
Oil; 6”H x 7.25”W; 2025



Still They Grow; \$240 Sold
Oil; 8”H x 5.5”W; 2025

**Sunny Disposition
\$180 Sold**
Oil
5.75”H x 5.75”W
2025



*“She keeps a sunny disposition
up there by the little pasture.
No cows and no hay
but that fresh coat of paint looks sharp.
Next to the new row of condos.”*



Superior Vacation; \$720
Oil; 24”H x 24”W; 2026

*“I just need you
To look
With me.
There’s no end.”*



Backwaters; \$360
Oil; 12”H x 12”W; 2023

*“It’s hiding.
Not in the rush of the fast river.
Not in the swoon of the fat lake.
But in the backwaters
Is where we pause.”*



Patch of Field; \$210 Sold
Oil; 6”H x 8”W; 2025



Behind the Stone Face; \$360 Sold
Oil; 12”H x 12”W; 2025



Saltwater Marsh; \$720
Oil; 12”H x 36”W; 2024



*Just Past the
Poplar; \$1,080
Oil; 36”H x
36”W; 2024*

*“I remember when the blacktop was new.
The long stretch by the back forty.
They must have left some poplars stand.
After the lines went in.”*



*Black River Tension; ~~\$360~~ **Sold**
Oil; 12”H x 12”W; 2023*



*Island of Calm; \$315
Oil; 9”H x 12”W; 2025*



*Seiche; \$315
Oil; 9”H x 12”W; 2025*



Deep Within;
\$720
Oil; 12”H x 36”W;
2025



Winter Shoreline; \$600
Oil; 20”H x 20”W; 2026

*“But isn’t that a long ways away?
It’s right outside.
It’s always been.”*



Beauty of the Overcast; \$540
Oil; 20”H x 16”W; 2026

*“The air hangs heavy as the night sinks.
Or as day begins.
But it could be high noon this time of year.
The hue won’t shift.
There’s enough time for rest.
That’s the beauty of the overcast.”*

Reserve Artwork:



Charter; \$315
Oil; 12”H x 9”W; 2024

*Reserve artwork available for private viewing and immediate acquisition.
Contact a Gallery Associate for details.*

Jerry Gray

Toledo, Ohio

Artist Biography

Jerry Gray studied commercial and graphic art for six years, graduating from Terra State Community College (Fremont, Ohio) in 2000. With access to numerous art supply resources during his formative years, Gray was drawn to exploring experimental art processes, an inclination that influences his studio process today. Gray creates work in illustration, printmaking, found object sculpture, photography and installation art.

As an active member and exhibiting artist of the Toledo arts community since 2000, Gray regularly participates in local and regional shows. In that time, among the numerous venues and institutions at which Gray has exhibited are Bozarts Fine Art and Music Gallery (Toledo, Ohio), *Locals Only* at River East Gallery (Toledo, Ohio), Just Jerry's (Toledo, Ohio), Toledo School for the Arts Porter Gallery (Toledo, Ohio) and the Collingwood Arts Center (Toledo, Ohio). His work has also been exhibited in Detroit, Michigan; San Francisco, California; Mars Hill, North Carolina. Over the past two decades, Gray has contributed to the Arts Commission of Greater Toledo's (Ohio) annual party and fundraiser, *The Mix*, as well as the Arts Commission's *Artomatic 419*. Across Toledo, Gray has been selected to create work at live painting events.

In addition to his own studio work, Gray is a gallerist and has experience as an arts event planner and coordinator; he has organized and curated nearly 200 exhibitions and arts events throughout Toledo, Ohio. The first two iterations of the annual *Tis the Secor* exhibition and open house of the Secor Building studios (Toledo, Ohio), are among his numerous projects. From 2009 – April 2015, Gray served as Owner/Operator/Curator and a contributing artist of Bozarts Fine Art & Music Gallery in Toledo, Ohio. Gray also has experience in press writing, as a past Contributing Columnist in Toledo. For his contributions to the arts, Gray has received numerous awards and honors, including mayoral recognition in 2013.



Jerry Gray

Photo courtesy of the artist

Artist Statement

Though the material components and methods of my work vary greatly the underlying intent remains. I am exploring and manipulating tangible bits of memories. Every image I depict and share are compositions of the malleability of memory. These compositions I have collected over the years of hiking, driving and simply exploring natural (often wild) beauty in places that both inspire me and remind of the contentment I rarely find. Not to only graciously memorialize, but to at times, manipulate them physically as our minds often do unconsciously.



Jerry Gray's studio
Photo courtesy of the artist

Jerry Gray Artwork

All work available for purchase. All artwork images provided by Jerry Gray. Dimensions list sheet size. Photographic artworks are presented in artist-made frame.



Superior Superior; \$375 Sold
Physically manipulated monoprint photo on acetate; 8.5”H x 11”W; 2025-2026



Inverse Shoreline & Clouds; \$375
Physically manipulated monoprint photo on acetate 8.5”H x 10.5”W; 2025-2026



Superior Driftwood; \$375 Sold
Hand-worked photographic monoprint on rice paper; 15.5”H x 11.25”W; 2025-2026



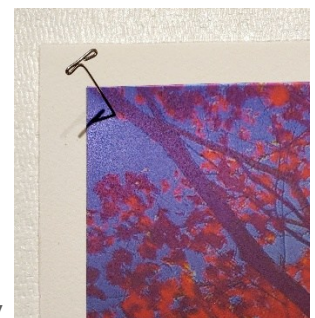
Superior Driftwood; \$275
Hand-worked photographic monoprint on rice paper 6”H x 6”W; 2025-2026



Red Tree; \$275
Physically manipulated monoprint photo on acetate and paper; 8.5”H x 8.5”W; 2025-2026

“Memories are not set, they blanch, saturate, fracture and construct themselves over a lifetime. My imagery is not documentation but an evolving perspective of what and how I wish to share my particular lens.”

“Red Tree” detail view





Colorado Trail;
\$500
Oil and aerosol on
acetate sheets;
42.5”H x 42”W;
2025-2026

*“By physically
manipulating my
digital imagery,
I believe my hand/
body become an
active participant
in remembering.*

*Each of these
moments can be
directly related to
where I was
physically as well
as the state of my
being and the
circumstances of
my soul when I
was there. Both
what I was seeking
and what I was
leaving, are what
these tokens are
to me.”*



MI Treeline & Superior Shoreline; ~~\$375~~ **Sold**
Physically manipulated monoprint photo on
acetate; 8.5”H x 10.75”W; 2025-2026



MI Treeline & Clouds; \$375
Physically manipulated monoprint photo on acetate;
8.5”H x 10.5”W; 2025-2026



El Cap; \$375

Physically manipulated monoprint photo on acetate and paper; 10.5"H x 8.5"W; 2025-2026

"My memories include physical sensations, the sand, bugs, the temperature difference in the sun vs the shade, a particular ghostly bird song I couldn't identify and never witnessed, how much weight I was carrying, how long I carried it, how cold the water was and so much minutia it actually seems incredible."



Colorado Trail (dark); \$275

Hand-worked photographic monoprint on rice paper; 6.25"H x 6.25"W; 2025-2026



Half Dome Tunnel Vision; \$275 Sold

Physically manipulated monoprint photo on acetate 9"H x 8"W; 2025-2026



Half Dome; \$275 Sold

Hand-worked photographic monoprint on rice paper; 6.75"H x 4.75"W; 2025-2026



Thousand Island Lake; \$275

Hand-worked photographic monoprint on rice paper; 6"H x 6"W; 2025-2026



Colorado Trail; \$275 Sold

Hand-worked photographic monoprint on rice paper 7"H x 7"W; 2025-2026



Colorado Trail Tunnel Vision; \$275 Sold

Hand-worked photographic monoprint on rice paper; 7.75"H x 7.25"W; 2025-2026



Snow Covered Tree; \$375

Hand-worked photographic monoprint on rice paper; 9.75"H x 8"W; 2025-2026



El Cap; \$950
Acrylic on canvas; 36”H x 36”W; 2025-2026

“I believe these moments and locations I seek are what heaven is intrinsically made of.”

Reserve Artwork:



Sunset on Superior; \$275
Physically manipulated
monoprint photo on acetate;
8.5”H x 8.5”W; 2025-2026



Gold Tree; \$275
Physically manipulated
monoprint photo on acetate;
8.5”H x 8.5”W; 2025-2026

*Reserve artwork available for private viewing and immediate acquisition.
Contact a Gallery Associate for details.*



Linville Gorge; \$275
Hand-worked photographic
monoprint on rice paper;
6.25”H x 6.25”W; 2025-2026



Towpath; \$275
Hand-worked photographic
monoprint on rice paper;
6.75”H x 6.75”W; 2025-2026



Yosemite Valley; \$275
Hand-worked photographic
monoprint on rice paper
6”H x 5.75”W; 2025-2026

Leslie Dietsch and Jerry Gray:

Moments in Latitude

Catalogue editor: Anastasia Wagner

Gallery Manager, 20 North Gallery

Copy editor: Condessa Croninger

Art Director, 20 North Gallery

© 2026, 20 North Gallery. All rights reserved.

For purchase inquiries, please contact 20 North Gallery.

20 NORTH

GALLERY

18 N. St. Clair Street, Toledo, Ohio 43604 419-241-2400
20northgallery.com — info@20northgallery.com